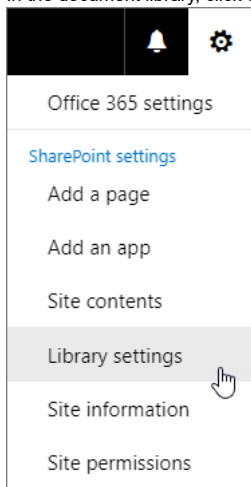
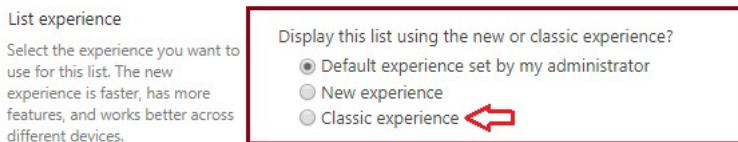


**Method 2:**

In the document library, click on settings icon and then Library Settings.



Click Advanced settings and then scroll down to List experience.

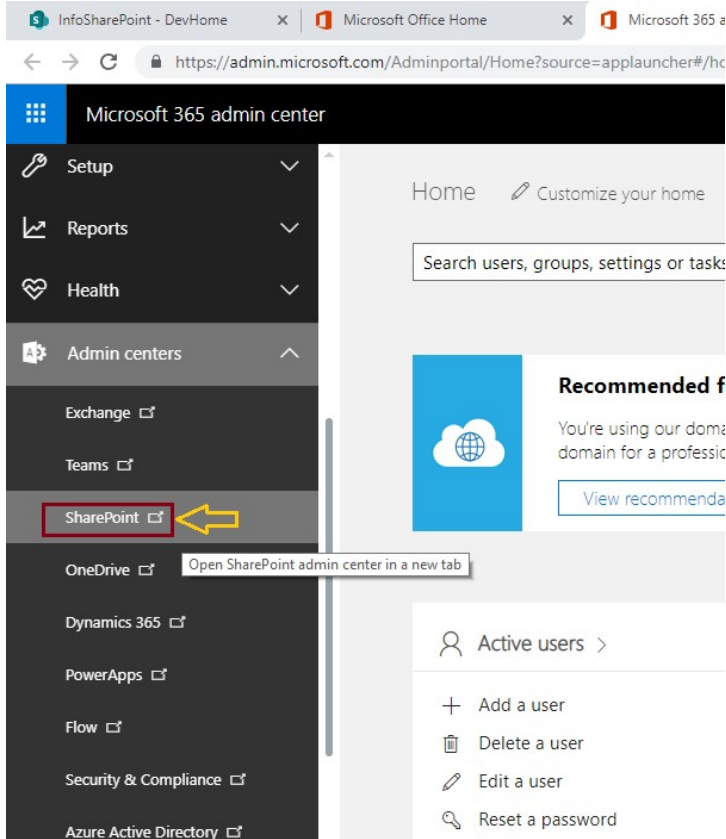


Choose the experience type here. This method will effect the changes to that particular library.

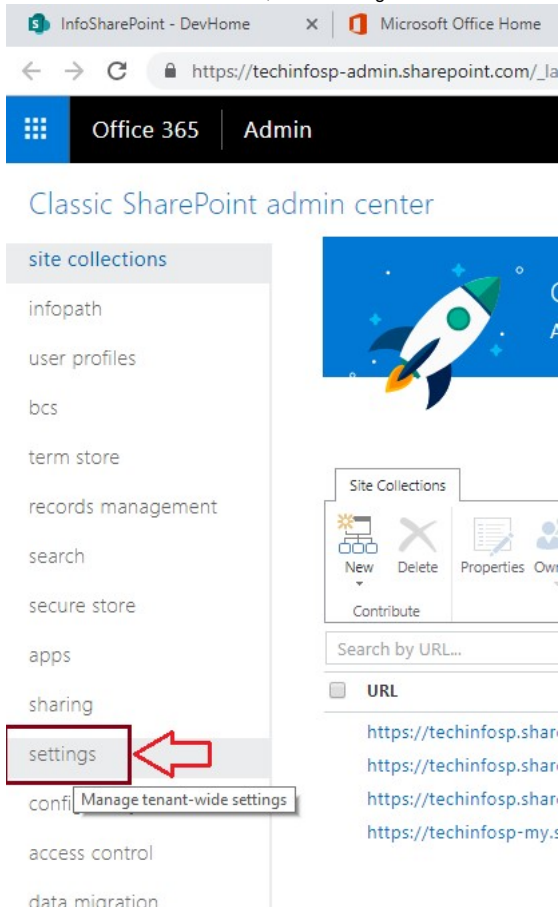
**Method 3:**

Go to O365 admin center.

From the left pane, under 'Admin Centers' section choose SharePoint.



From SharePoint Admin Center, select settings

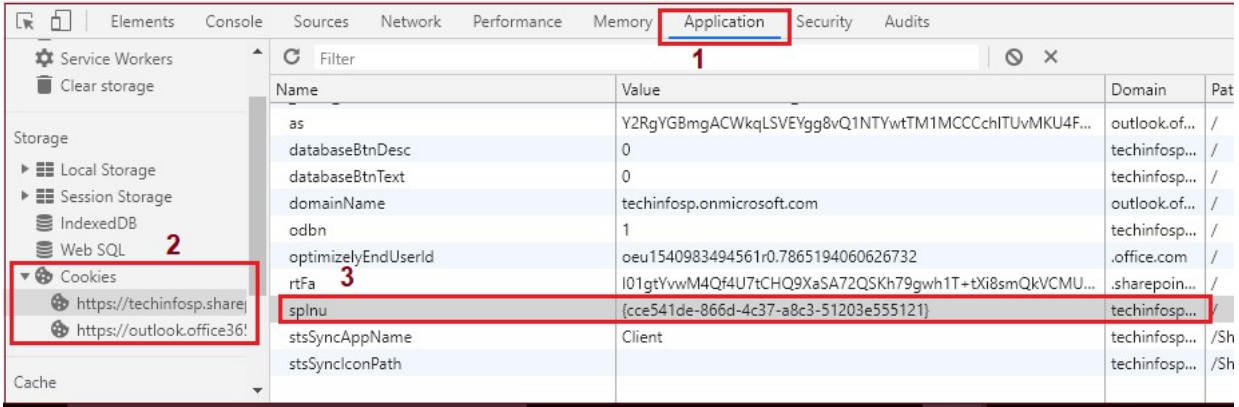


Next to *SharePoint Lists and Libraries experience*, select either *Classic experience* or *New experience*. This method will change the default experience for all lists and libraries.

Now if you want to **return back to modern view from classic experience**, you tried clicking on link that exit classic view, but the view doesn't change. Even if you try to change in the document library settings (Advanced settings) and the SharePoint Online Admin Center nothing works. This is because of the classic view changes saved as the session cookie. So in order to move back to modern view immediately you need to clear the cookies stored in browser and below are the steps how to do it.

- Open developer tools(F12) in the browser. Just click F12 function key.

- Click on application tab, expand cookies section and select the sharepoint online site which you currently working on.



- Delete the one with the name 'spInu' that has the value 0
- Refresh the browser and that's it!! you are now moved to modern view.

Hope this helps you!!

- Classic View to Modern View (<https://infosharepoint.com/tag/classic-view-to-modern-view/>), Exit classic experience SharePoint (<https://infosharepoint.com/tag/exit-classic-experience-sharepoint/>), sharepoint change to modern view (<https://infosharepoint.com/tag/sharepoint-change-to-modern-view/>), SharePoint switch to modern view (<https://infosharepoint.com/tag/sharepoint-switch-to-modern-view/>), Switch back to New Experience (<https://infosharepoint.com/tag/switch-back-to-new-experience/>), switch between classic and modern (<https://infosharepoint.com/tag/switch-between-classic-and-modern/>)

### 14 comments

Skip to comment form

1. Kaiserin der Welt on October 24, 2018
  - # (<https://infosharepoint.com/switch-back-to-modern-view-in-sharepoint-online/#comment-2>)
  - Reply

You saved my day!

2. Amy K on January 10, 2019
  - # (<https://infosharepoint.com/switch-back-to-modern-view-in-sharepoint-online/#comment-4>)
  - Reply

Instructions for deleting the cookie were especially helpful. Thank you!!

3. Nathalie Olsson on March 18, 2019
  - # (<https://infosharepoint.com/switch-back-to-modern-view-in-sharepoint-online/#comment-5>)
  - Reply

How do I switch from modern to classic view? 😊

1. admin () on April 23, 2019
  - Author
  - # (<https://infosharepoint.com/switch-back-to-modern-view-in-sharepoint-online/#comment-9>)
  - Reply

Hello Nathalie Olsson, updated the post with screenshots. Hope it helps!!

4. Fran on April 9, 2019
  - # (<https://infosharepoint.com/switch-back-to-modern-view-in-sharepoint-online/#comment-6>)
  - Reply

How do I switch from classic view to modern? Can you please share the step by step. The classic view is awful.

1. admin () on April 23, 2019
  - Author
  - # (<https://infosharepoint.com/switch-back-to-modern-view-in-sharepoint-online/#comment-8>)
  - Reply

Hello Fran, updated the post with screenshots. Hope it helps!!

5. coss on April 21, 2019
  - # (<https://infosharepoint.com/switch-back-to-modern-view-in-sharepoint-online/#comment-7>)
  - Reply

Sharepoint is killing me... I so regret getting involved in this mess...

6. Guido on May 16, 2019
  - # (<https://infosharepoint.com/switch-back-to-modern-view-in-sharepoint-online/#comment-10>)
  - Reply